



The Nonprofit CDM as a Global Impact Game- Changer

January 21, 2021



Your Nonprofit CDM tour guides



TIM
Lockie



RYAN
Ozimek



ERIK
Arnold



DAN
Lammot

Agenda

1

Welcome to the community!

2

Nonprofit CDM history

3

Diving into the details

4

Q&A

5

Next steps

Welcome!



Vision

- + A world where less resources are spent moving data and more time spent leveraging data to achieve the Sustainable Development Goals.

Mission

- + To nurture the growth of a vibrant nonprofit data model ecosystem and to more effectively achieve the SDGs through business, nonprofit, and individual collaboration.



A community for partners, by partners

Online community

CDM FOR NONPROFITS COMMUNITY

Announcements

Common Data Model for Nonprofits community an. ✓ Joined

NEW CONVERSATIONS ALL CONVERSATIONS FILES SEARCH

Update Question Poll Praise Announcement

Share something with this group...

Amanda Cunningham – January 15 at 11:09 AM

It's almost the weekend! Before you sign off make sure you check out the PICnet blog post on the Nonprofit Common Data Model virtual event happening next week - an event so nice, it's being held twice! #NonprofitCDM

Free Webinar: The Nonprofit CDM as a Global Impact Game-Changer, Thursday, January 21st at 10am & 8pm ET

<https://www.soapboxengage.com/blog/1969-virtual-event-the-nonprofit-cdm-as-a-global-impact-game-changer>

MEMBERS (9)

INFO

[Click here to edit this section.](#)

GROUP ACTIONS

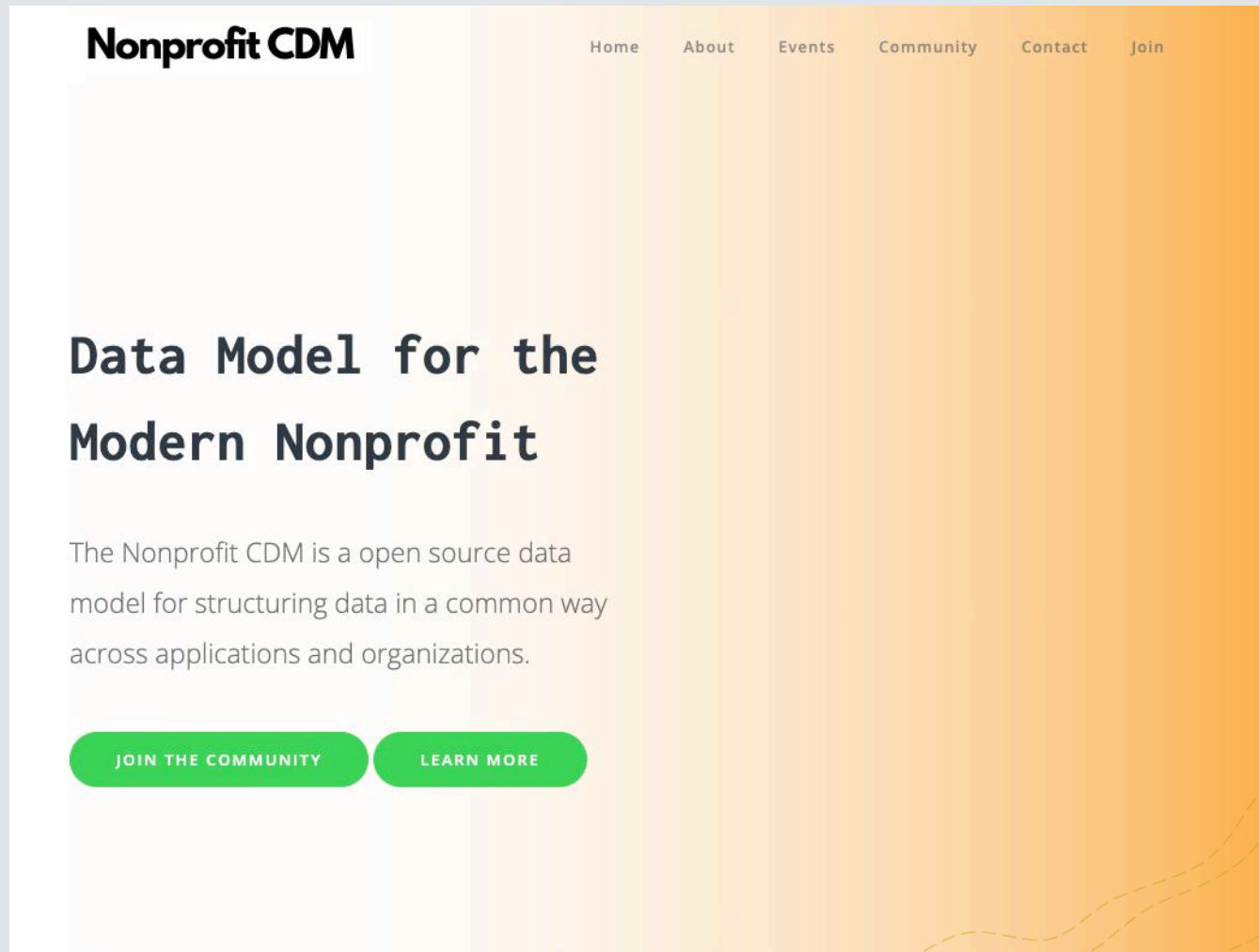
[View Group Insights](#)

NETWORK RESOURCES Add

[CDM for Nonprofits E...](#)

<https://www.yammer.com/cdmfornonprofitscommunity>

Information Hub



Nonprofit CDM

Home About Events Community Contact Join

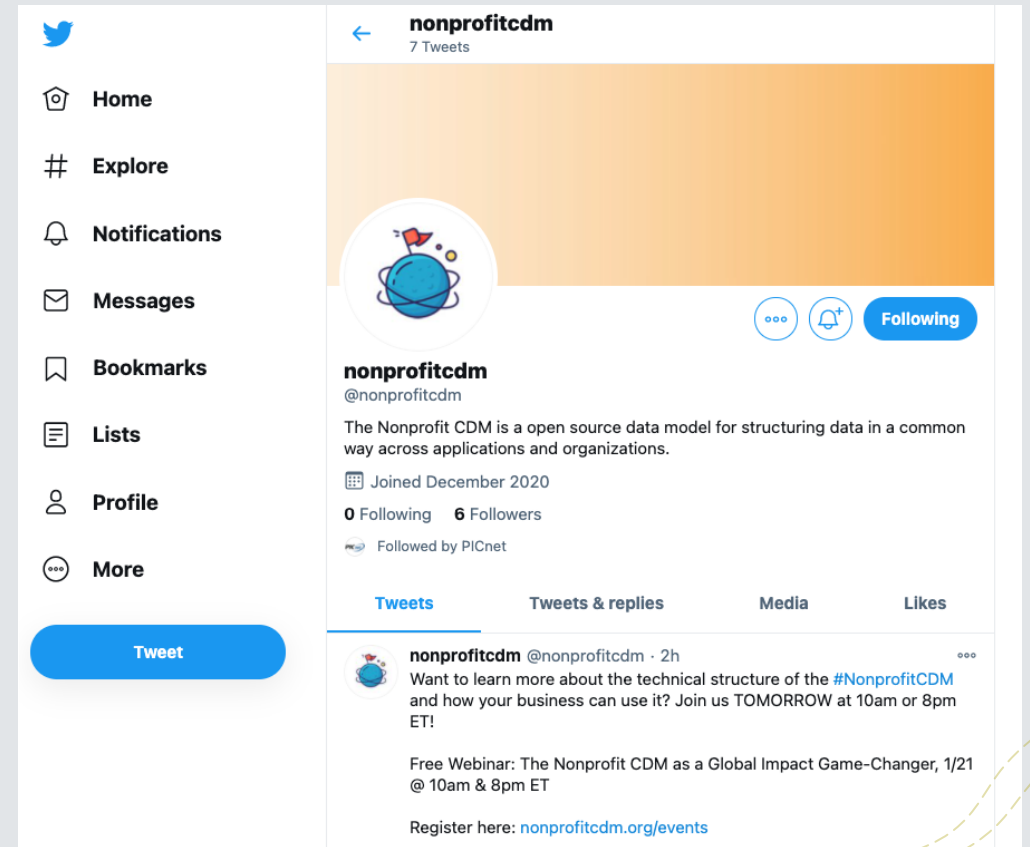
Data Model for the Modern Nonprofit

The Nonprofit CDM is a open source data model for structuring data in a common way across applications and organizations.

[JOIN THE COMMUNITY](#) [LEARN MORE](#)

<https://www.nonprofitcdm.org>

Social media



@NonprofitCDM

Access the data model

MicrosoftDocs / common-data-model-and-service

Watch 18 | Star 24 | Fork 41

Code | Issues 12 | Pull requests 1 | Actions | Projects | Wiki | Security | Insights

master | common-data-model-and-service / common-data-model / schema / core / applicationCommon / foundationCommon / crmCommon / accelerators / nonProfit / overview.md | Go to file

llawwai fix the website entity issue | Latest commit 5f16f52 on Aug 7, 2020 | History

7 contributors

27 lines (20 sloc) | 645 Bytes | Raw | Blame

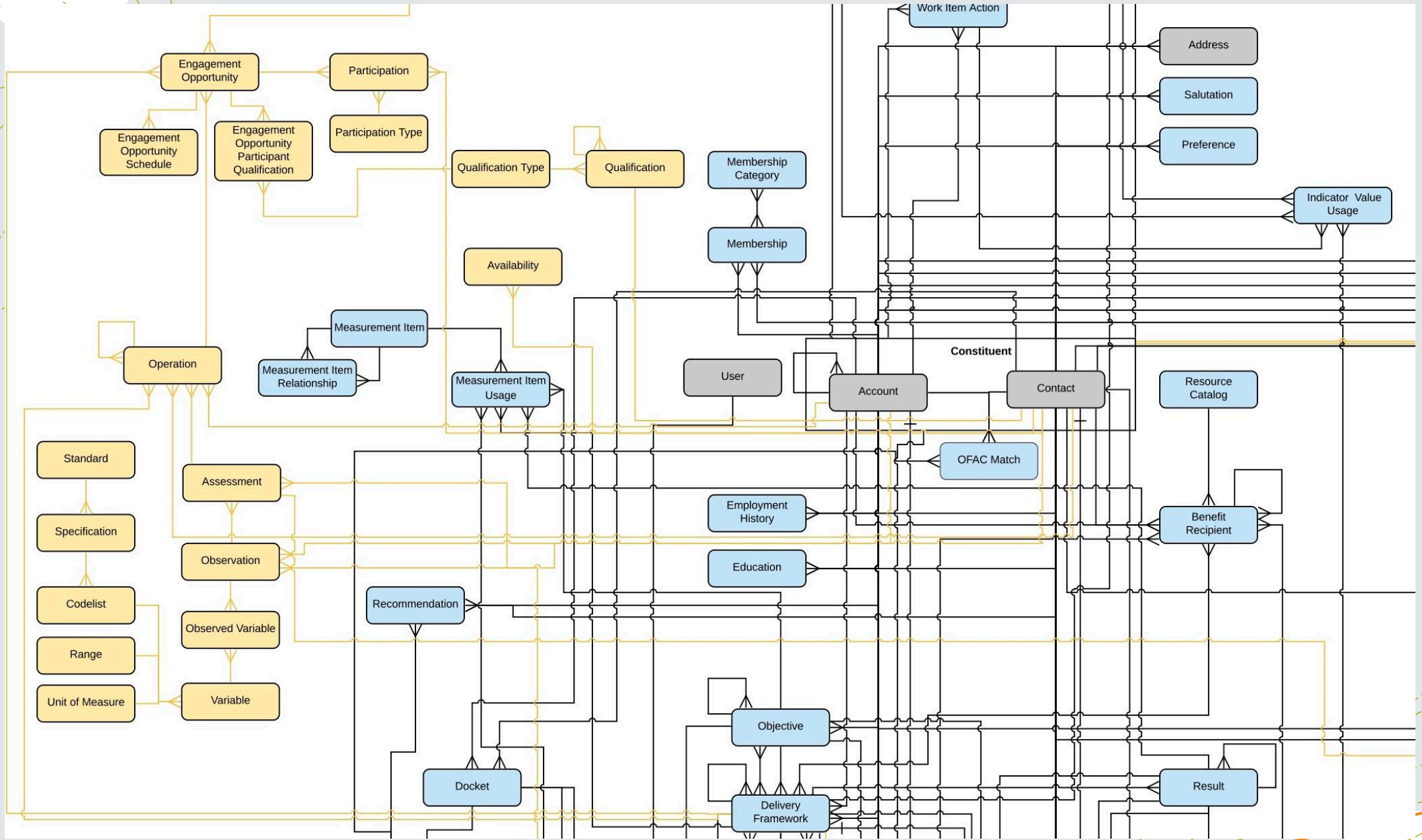
title	description	author	ms.service	ms.reviewer	ms.topic	ms.date	ms.author
overview of nonProfit - Common Data Model Microsoft Docs	nonProfit is a folder that contains standard entities related to the Common Data Model.	llawwai	common-data-model	deonhe	article	8/7/2020	weiluo

Overview of nonProfit

CDM 'nonProfit' Accelerators

Sub-folders

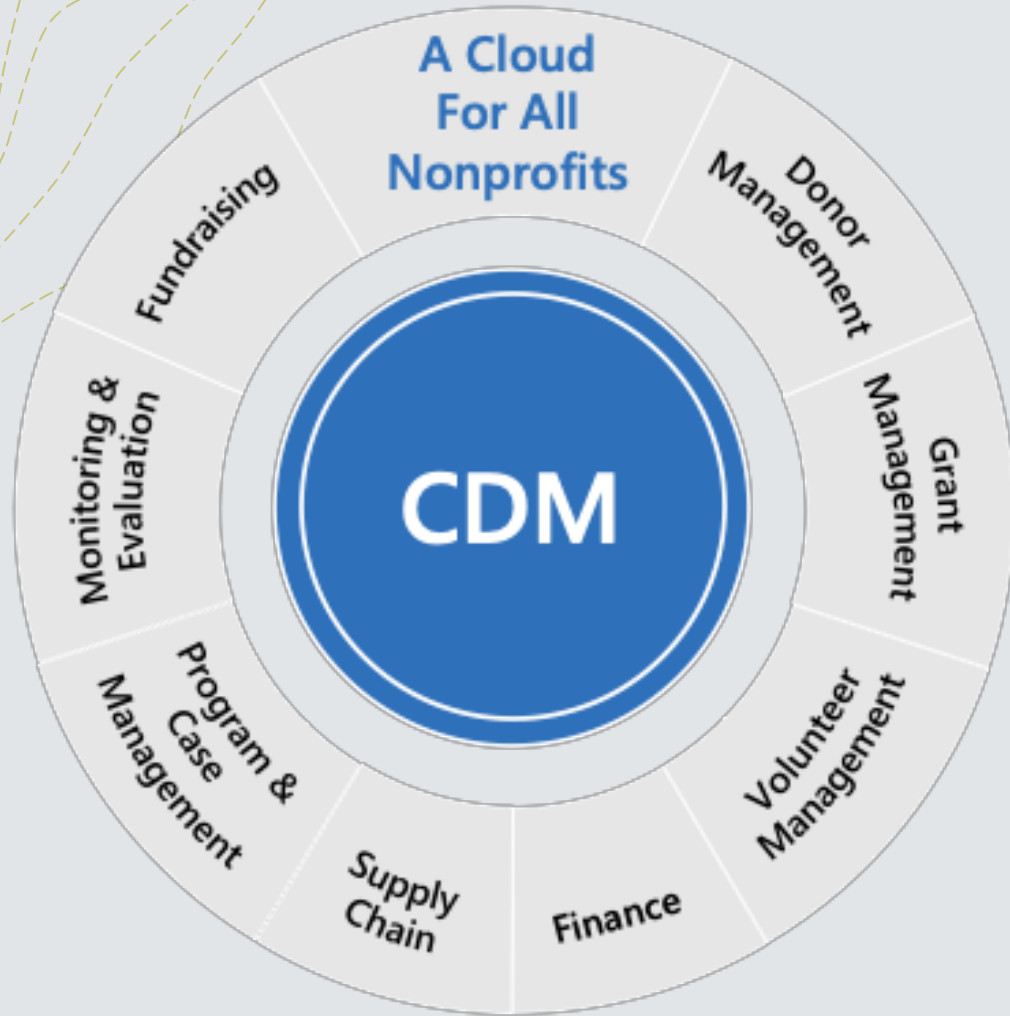
Name
nonProfitCore
nonProfitForSales



Nonprofit CDM History



Common Data Model for Nonprofit



Built by and for the sector and adopted by over 50 partners



Data integration and uniformity across platforms



Interoperability across apps and services



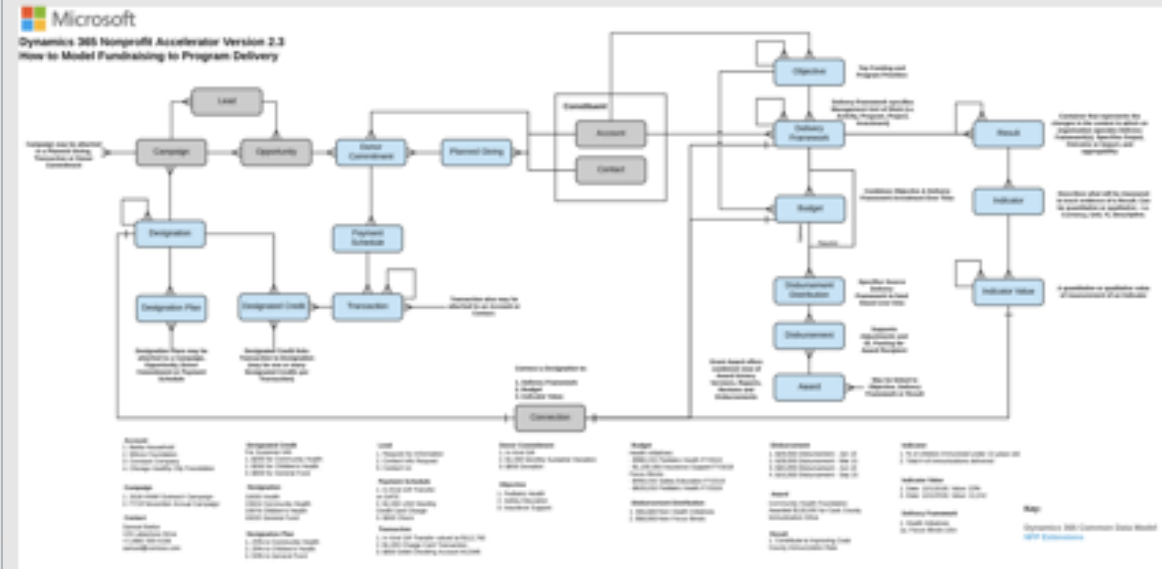
Nonprofit-specific data schema



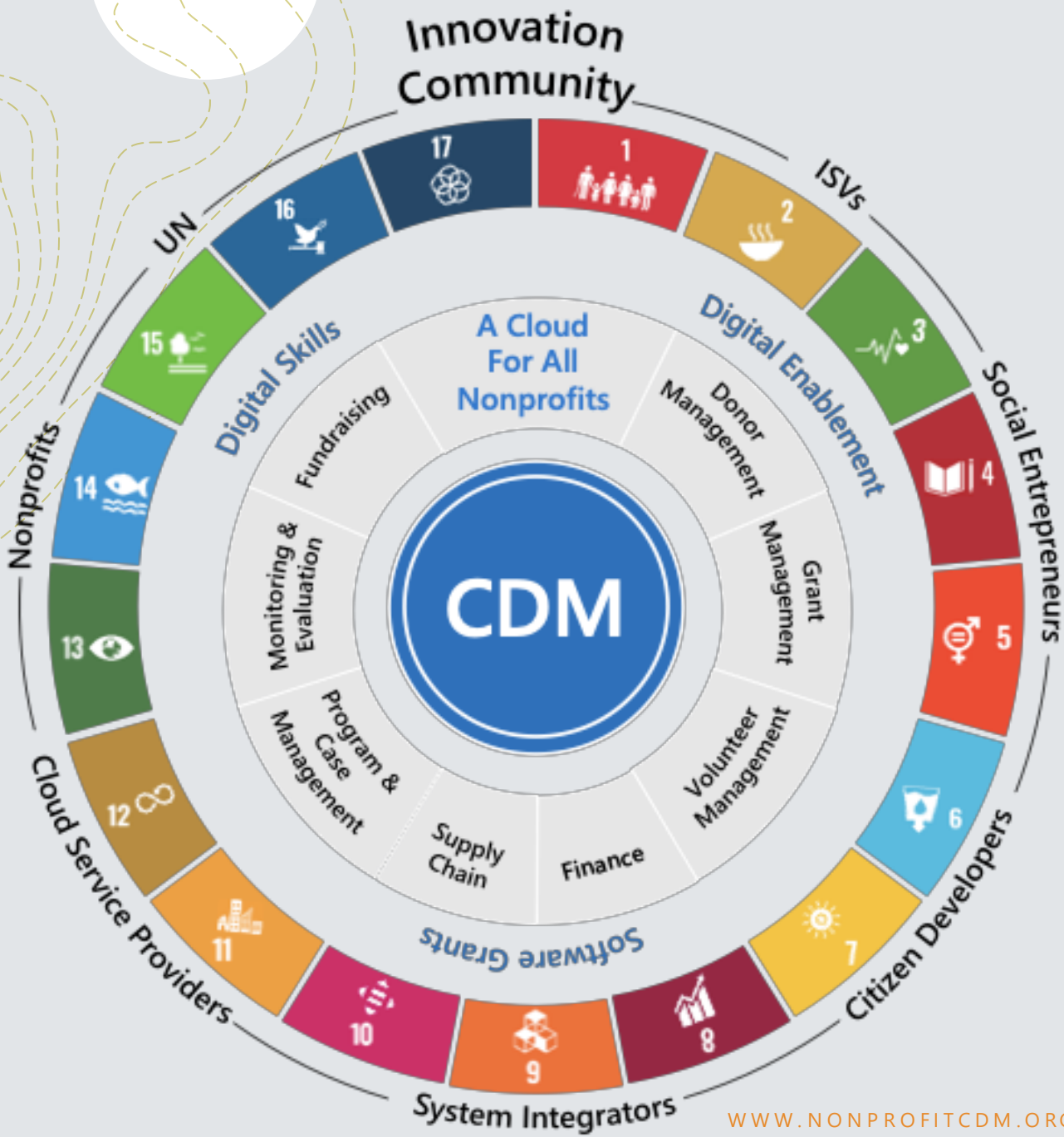
Proven, mature model for ISVs to build solutions at scale



Built-in industry standards like SDGs and IATI



Exponential Innovation



WWW.NONPROFITCDM.ORG | @

6269 Microsoft partners serving nonprofits in the last 30 days

now **it** matters

avanade blackbaud illuminance

jacksonriver m-hance MISSION CRM

QUANTIQ Soapbox Engage StratusLIVE threshold.world

EY Building a better working world barhead REVEL

WIPFLI CPAs and Consultants TECHIMPACT® SONATA

TECHNO BRAIN Inspiring solutions... techsoup UNIT4

SERENIC SOFTWARE HELLER CONSULTING Technology Strategists for nonprofits

Diving into the details

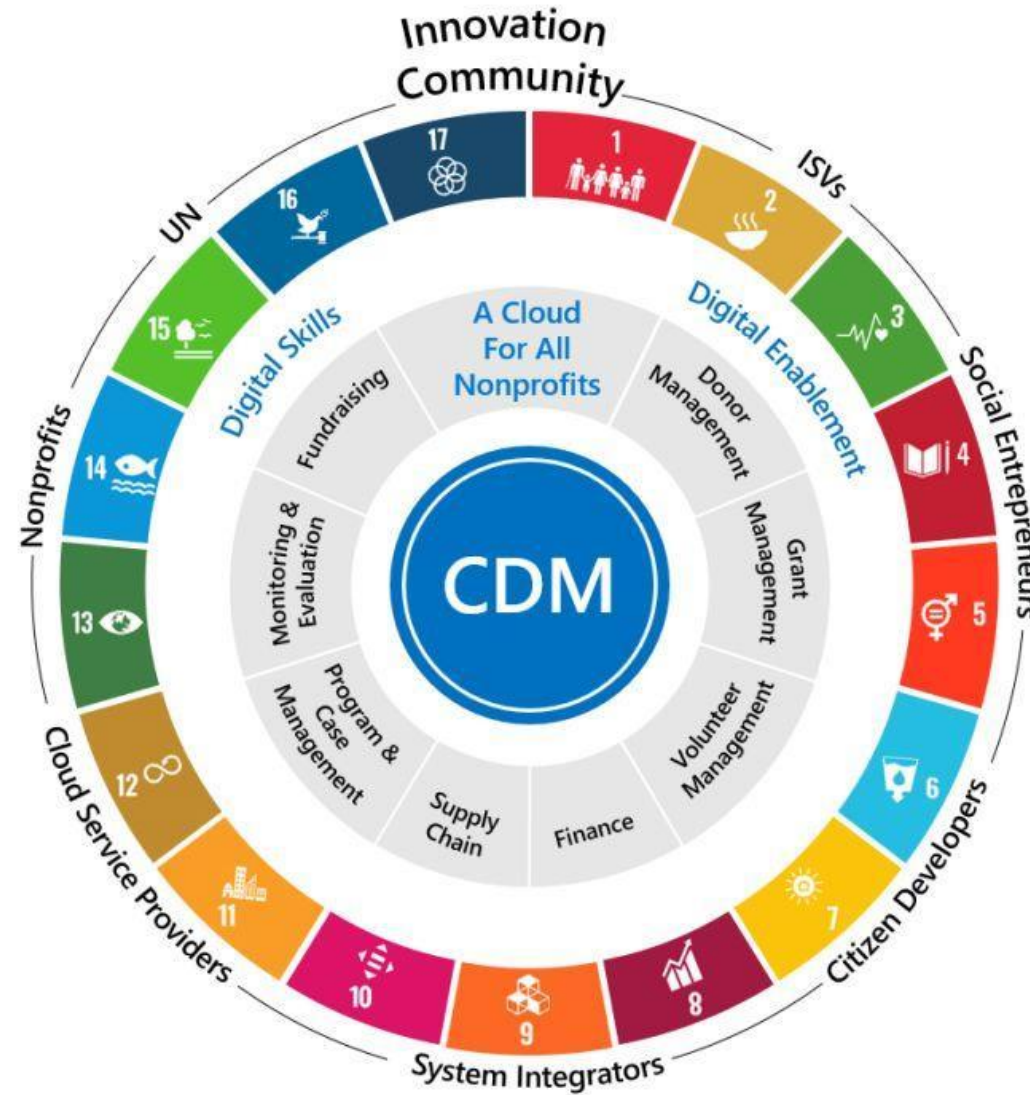


A common data model is:

***A shared data language
for business and
analytical applications
to use***

CDM for Nonprofits Top 10:

1. Built last



2. Sector Driven



3. AND not OR



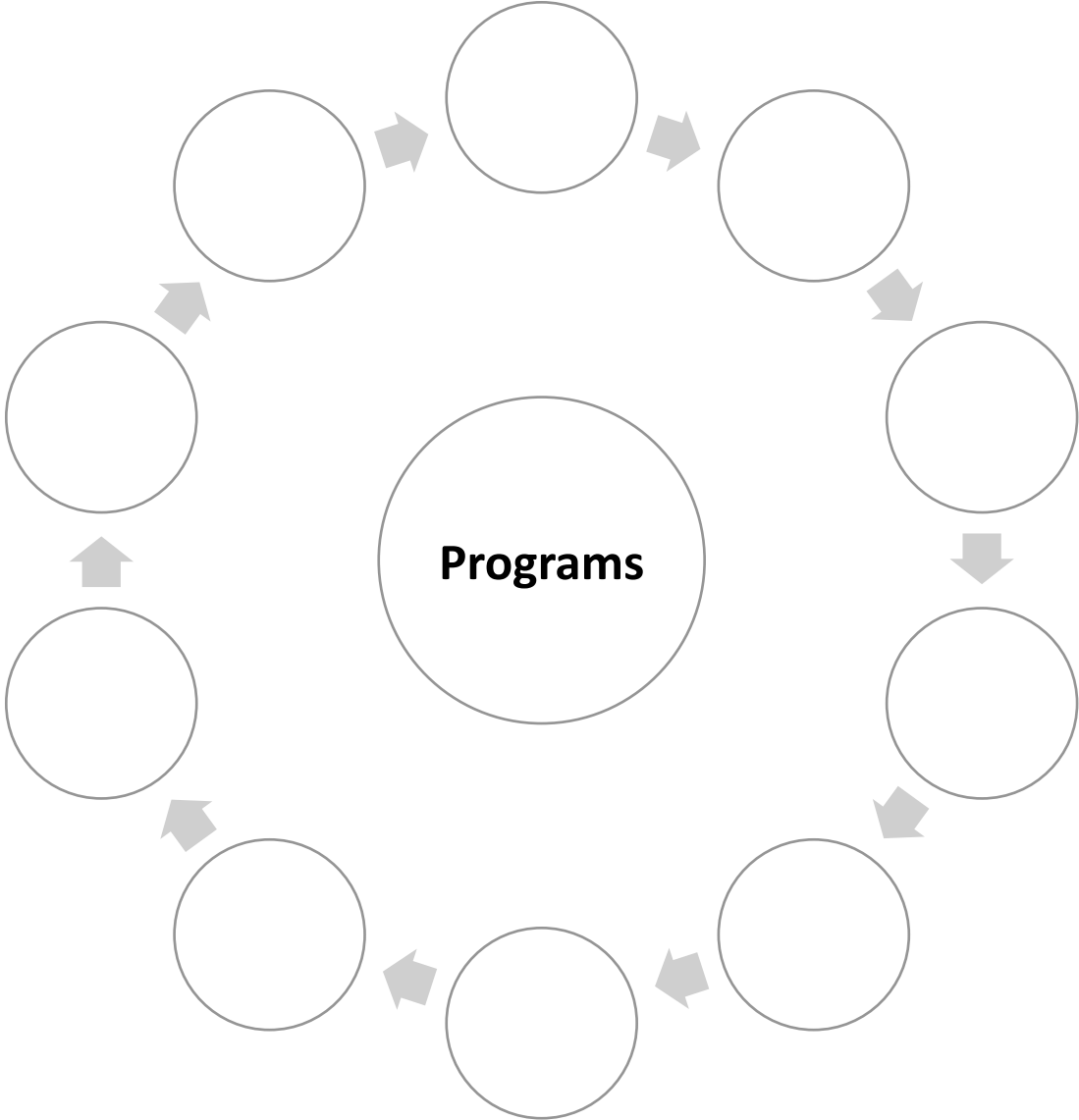
Our technology must be a digital manifestation
of our commitment to inclusivity

4. Stewarded by Microsoft

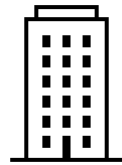
Correct: *Common Data Model for Nonprofits*

Incorrect: *Microsoft's Common Data Model for Nonprofits*

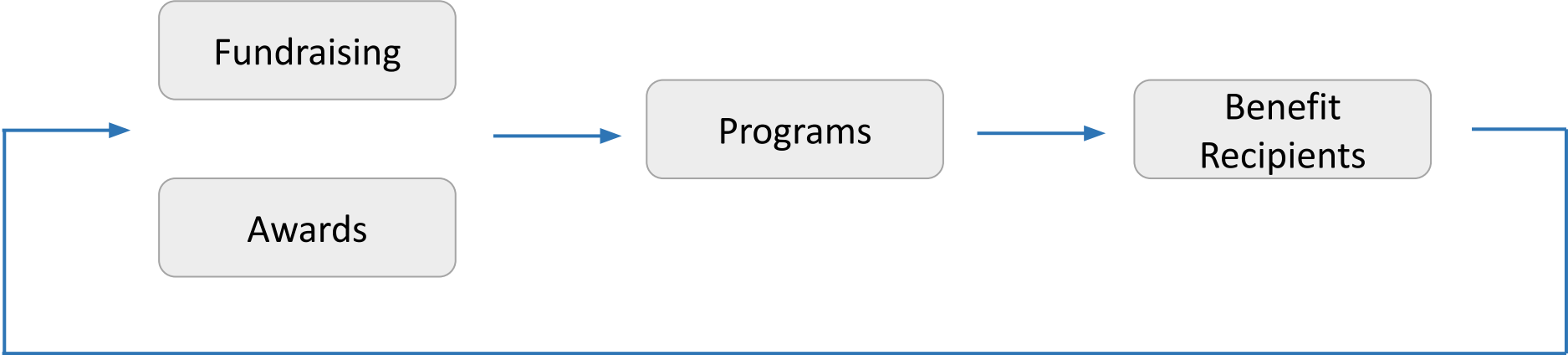
5. Programs First



6. Contacts is a 1st Class Table

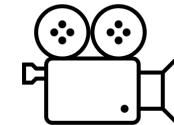
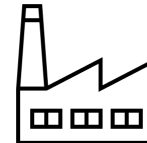
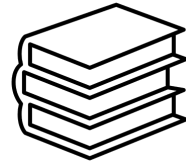
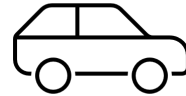


7. Benefit Recipients



8. One of Many CDMs

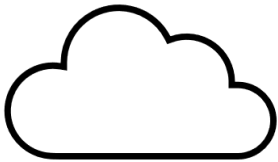
- Currently available CDMs:



- Overview of CDMs and Industry Accelerators:

- <https://docs.microsoft.com/en-us/common-data-model/industry-accelerators>

9. Breadth



Tables

80+



Fields

1300+



Relationships

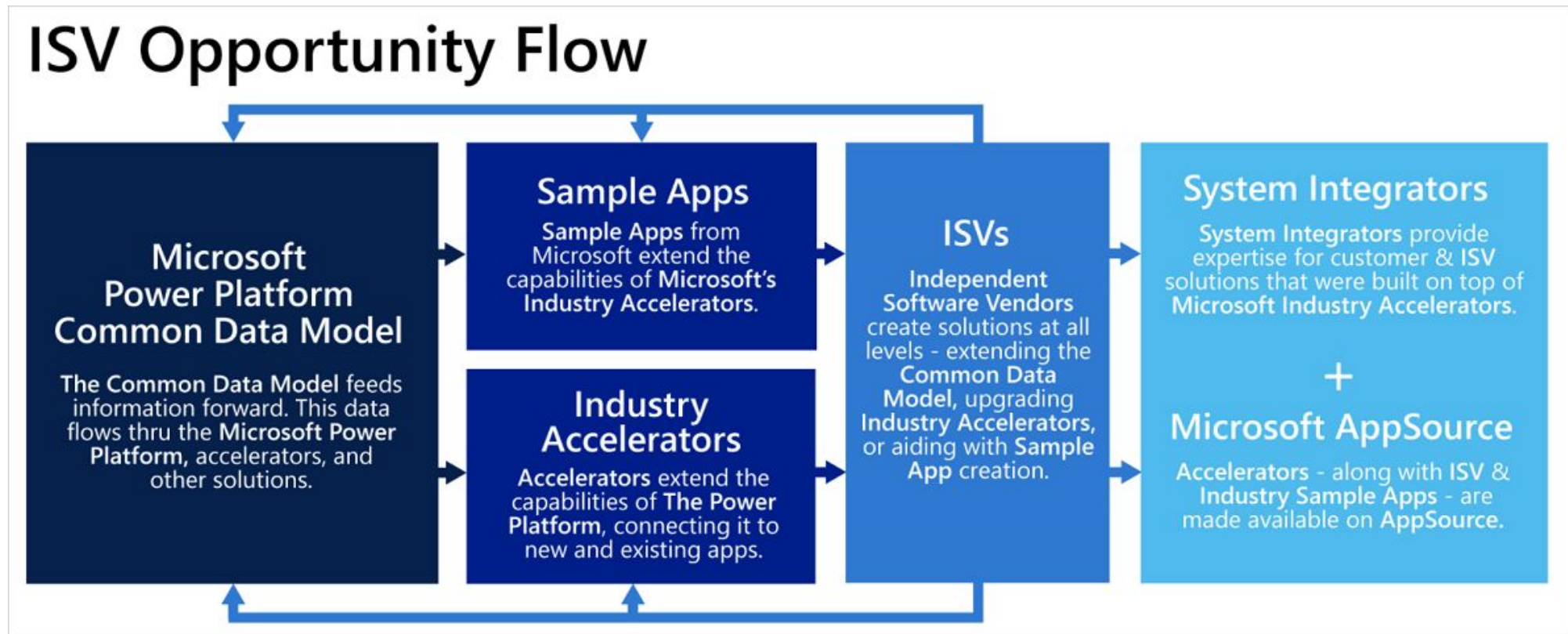
100+



Metadata

Typed

10. Microsoft is a Partner Driven Company



CDM for Nonprofits Top 10:

1. Built last
2. Sector driven
3. AND not OR
4. Stewarded by Microsoft
5. Programs first
6. Contact is a 1st class table
7. Benefit Recipients
8. One of many CDMs
9. Breadth
10. Microsoft is a partner driven company

Thanks!

info@nonprofitcdm.org
www.nonprofitcdm.org





Join the community!

<https://www.nonprofitcdm.org/join>

